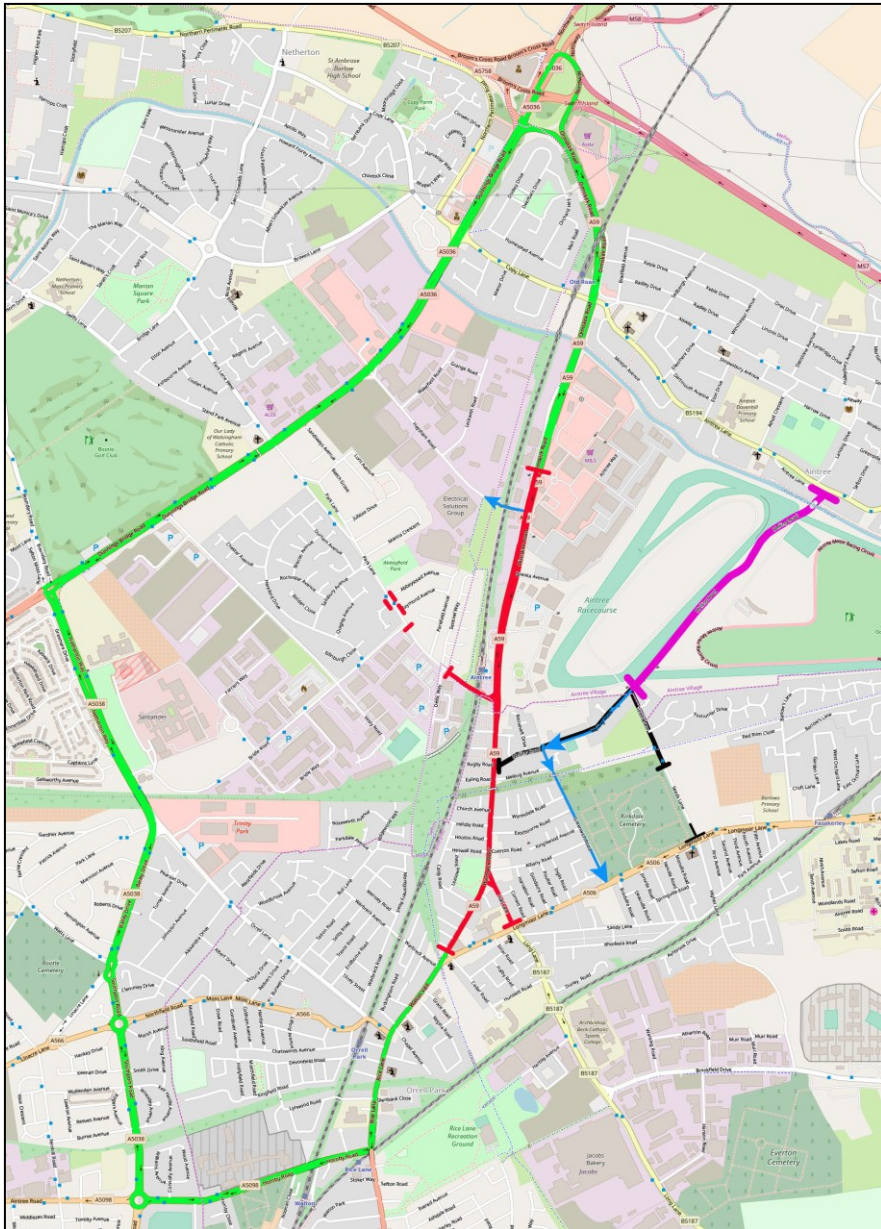


GRAND NATIONAL ROAD CLOSURES

A series of road closures are implemented in and around Aintree to facilitate the transport management plan for the Grand National Festival. Exact details of each closure are shown below. The closures will be implemented and maintained by Tracsis using suitably qualified operatives where necessary. Aintree Racecourse will make the applications for closures directly to Liverpool City Council, Sefton Borough Council and/or local councils as appropriate.



Melling Road: Closed at junction of Seeds Lane to junction of Aintree Lane from 07:00 Wed until 22:00 Sat (purple line)
The diversion is Melling Road, Warbreck Moor, Ormskirk Road, Aintree Lane and Vice Versa

FULL ROAD CLOSURES: Daily (red line)
15:00 - 21:00 Thursday - Saturday

The diversion route is marked in green.

Seeds Lane, Melling Road and Greenwich Road (black line)
Closed daily from 07:00 - 21:00 Thursday - Saturday
- Residents access ONLY

Melling Road, Greenwich Road and Heysham Road (at the bridge):
One Way each day 15:00 - 21:00 Thursday – Saturday